

FIRE
SAFETY



EQUIPMENT

HOME



FACP

DETECTOR

VOICE
EVACUATION



SIAM SYNDICATE TECHNOLOGY PCL

FIRE SAFETY EQUIPMENT

YF-1 SERIES

YF-1 Conventional Fire Alarm Control Panel

Features

- ♦ **Two-stage delay function:**
After loop detection has continued for a period of time, the control panel will automatically reset and start the second stage delay detection. This minimizes false alarms and increases reliability.
- ♦ **Backup power supply protection:**
During a blackout, when the backup power output falls to under DC18V, the output would automatically cut off to extend the battery life.
- ♦ **Lightning surge protection:**
The power module is equipped with lightning surge protection, preventing damage to the control panel from high voltages or power surges.
- ♦ **Quality control:**
All components inside the control panel and the parts used on boards have passed CE and CNS quality certifications. The control panel must pass strict tests to ensure the quality of the panel and system before delivery.

Dimensions

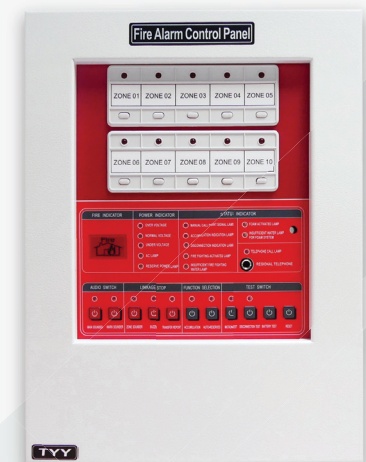
Box Type	Wall-mount				
Number of Loops	5~10L	15L	20L	30L	40L
Height (mm)	400	495	580	520	580
Width (mm)	300	300	300	480	480
Depth (mm)	120	120	120	180	180

Specifications

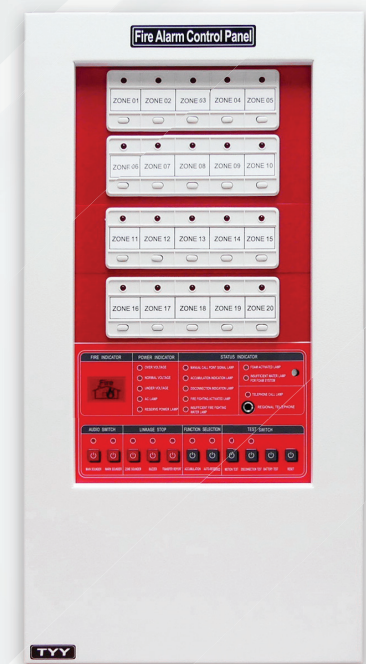
Item	Specifications
Model Number	YF-1
Power Supply (AC)	AC 220V 50/60Hz
Backup Power Supply	DC 24V
Charging Voltage and Current	Under DC 26V 450mA , fixed voltage trickle charging
Circuit External Impedance	Circuit impedance 50Ω or less, impedance to ground 2MΩ or more.
Detector Installation	No limitation for the number of Conventional Rate of Rise Heat Detectors / Fixed Temperature Heat Detectors. A maximum of 30 smoke detectors (DC 24V 40μA) can be connected to a loop.
E.O.L Impedance	10KΩ
Number of Indicating Lamp	1.2 times of the panel loop (LED indicator light)
Number of Fire Alarm Bell	1.2 times of the panel loop
Cabinet Material	Steel plate with powder coating
Main Sounder	Monotone buzzer (over 85 dB at 1 meter away)
Alarm Relay Contact	Non-voltage NO contact capacity AC 250V 7A × 2 sets
Panel Color	Red / Green / Black
Switch Mode	Push-button / Rocker switch



YF-1 / 5L / Push-button



YF-1 / 10L / Push-button



YF-1 / 20L / Push-button

PHOTOELECTRIC SMOKE DETECTOR

YDS-S SERIES



YDS-S01



YDS-S01-E



YDS-S01-D
(Three-wire type)

Features

- ◆ Insect net is used to prevent dust, insects and other objects from entering and triggering a false alarm.
- ◆ Photoelectric smoke detector detects rapidly and stably.
- ◆ Our detector has passed the EN 54-7 standard. It has high sensitivity and low rates of false alarms so you can use it without worries.
- ◆ Ring-shaped warning light makes the alarm visible from all angles.
- ◆ We use a common base for detectors, which makes installation very convenient.
- ◆ Green monitoring indicator clearly shows when the detector is functioning normally.
- ◆ Easy to maintain and reuse.
- ◆ No polarity wiring to avoid wiring errors.
- ◆ Equipped with contacts for remote indication of light, relay, and normal use, making it suitable for system connections and control (optional).

Specifications

- ◆ Activating concentration:
YDS-S01: 15%, Within 30 seconds
YDS-S01E: 3.5%. Within 30 seconds
- ◆ Rated voltage: DC 24V
- ◆ Rated current: 25mA
- ◆ Current monitor: Less than 35μA
- ◆ Relative humidity: 0~95%
- ◆ Ambient temperature: 0°C~50°C
- ◆ Dimensions: 100.95(Dia.)×45.84(H) mm

Effective Monitoring Area

Height From Ground	Coverage Area
<4 m	150 square meters
> 4 m & < 20 m	75 square meters



Conventional Detectors

YDT-S SERIES

YDT-S01 Fixed Temperature Mechanical Fire Alarm Detector

Operating Principle

- When the ambient temperature rises to the preset temperature, the double-sided metal of the sensor will flip and conduct due to the difference in expansion coefficients. Once triggered, a signal is sent to the fire alarm control panel to complete the fire detection process.

Features

- The detector uses UL-certified fixed temperature sensor that has passed quality control and repeated testing for stable and reliable detection of fires.
- Dual light guide makes the alarm visible from all angles.
- A common base makes installation very convenient.
- Sealed design prevents dust and moisture from entering and affecting functionality.
- Suitable for places with high temperature or rapid changes in temperature, such as kitchens or restaurants

Specifications

- Rated temperature: 70°C
- Activating temperature: Rated temperature \times 125%
Activation within 120 seconds
- Rate voltage/current: DC 24V 25mA
- Relative humidity: 0~95%
- Ambient temperature: 0°C~50°C
- Material: Flame-resistant plastic (UL94V-0 compliant)
- Dimensions: 100.92(Dia.) \times 41.3(H) mm



Effective Monitoring Area

Height From Ground	Building Structure	Coverage Area
<4 m	Fireproof building materials	60 square meters
	General building materials	30 square meters
> 4 m & < 6 m	Fireproof building materials	30 square meters
	General building materials	15 square meters

RATE OF RISE HEAT DETECTOR

YRD SERIES

YRD-01 Rate of Rise Heat Detector

- Rate-of-rise heat detector detects intense fires by quickly responding to rapid temperature increases.
- Mechanical operating principles ensure the long-term durability and the least malfunction.
- Self-restoring function for repeated use.
- High quality components are fitted for greater reliability.
- Red indicating lamp illuminates when detector is activated.
- High-temperature-enduring plastic and fire-proof material are used to build up the main body of the detector.
- The base is in common with other detectors made in this company for the facilitation of installation.
- Connections are non-polarized to avoid wiring mistakes.



Operating Voltage	12~30V DC	Alarm Temp	Comply to EN54, CNS
Alarm Current @ 24V DC 750Ω	30mA (Max.)	Ambient Temperature	0°C~50°C
Polarization	Non-polarized	Ambient Humidity	0~95%
Weight	156g	Color	White
Dimensions	102(Dia.) \times 45(H) mm	Material	Flame retardant plastic

COMBINATION SMOKE AND HEAT DETECTOR

YSH SERIES

YSH-01 Combination Smoke and Heat Detector

- It has the functions of both photoelectric type smoke detector and fixed temperature heat detector.
- The sensitive part is enclosed to prevent from being moistened and contaminated.
- Self-restoring ensures the elements repeated use and by removing the cover can maintain and clean easily.
- The P.C.B. is used in SMT design. It can achieve the requests of good quality and long-term durability.
- It uses advanced linear electronic circuit process, so it could response quickly. (Operating voltage 12V to 30V DC)
- The detector is designed to prevent from the electromagnetic wave; the P.C.B. is made to prevent from moisture.
- Connections are non-polarized to avoid wiring mistakes.



Operating Voltage	12~30V DC	Alarm Temp	Comply to EN54, CNS
Alarm Current @ 24V DC 750Ω	30mA (Max.)	Ambient Temperature	0°C~50°C
Standby Current	24V DC / 25μA Below	Ambient Humidity	0~95%
Polarization	Non-polarized	Color	White
Weight	156g	Material	Flame retardant plastic
Working Smoke	15% within 30s	Working Temperature	55°C×125% within 300s
Dimensions	102(Dia.)×45(H) mm		

MULTIPURPOSE HEAT DETECTOR

YMH SERIES

YMH-01 Multipurpose Heat Detector

- The sensitive of fixed temperature heat detector part is stabilized performance, long-term durability and least malfunction are ensured by employing a bimetal mechanism. (certificated by UL)
- The exhaust valve of rate of rise heat detector part uses optical fiber glass capillary tubing that is heat-resistant and moisture-proof. Therefore, the fault alarm never occurs.
- Self-restoring ensures repeated use. The sensitive part is enclosed to prevent from being moistened and contaminated.
- Mechanical operating principle ensure the long-term durability and the least malfunction.
- High-temperature-enduring plastics and fireproof material are used to build up the main body of the detector that is also nicely shaped.
- The base is in common with other detectors made in this company for the facilitation of installation.
- Connections are non-polarized to avoid writing mistakes.



Operating Voltage	12~30V DC	Alarm Temp	Comply to EN54, CNS
Alarm Current @ 24V DC 750Ω	30mA (Max.)	Ambient Temperature	0°C~50°C
Polarization	Non-polarized	Ambient Humidity	0~95%
Fixed Temperature	70°C	Working Temperature	ROR heat detector: Temperature 30°C Fixed heat detector: Temperature 70°C
Weight	132g	Alarm Activated Time	ROR heat detector within 30 sec Fixed heat detector within 120 sec
Dimensions	102(Dia.)×45(H) mm	Color	White
Material	Flame retardant plastic		

YMP SERIES



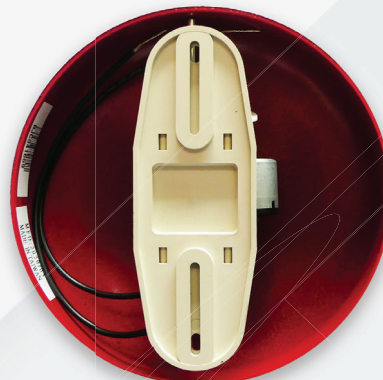
YM-P01 Fire Manual Station

YM-P01 BASE Surface Mounted Base

- ♦ Auto-Return push button, no need to disassemble the main body.
- ♦ Response light available to identify the operation completed.
- ♦ Reinforced transparent protective cover is reusable.
- ♦ All parts are flame retardant plastic.
- ♦ Easy connection through terminators

Rated Voltage	24V DC	Color	Red	Weight	150g
Alarm Current	30mA	Dimensions	139.6(Dia.) × 61.55(D) mm	Material	Flame retardant plastic

YFB SERIES



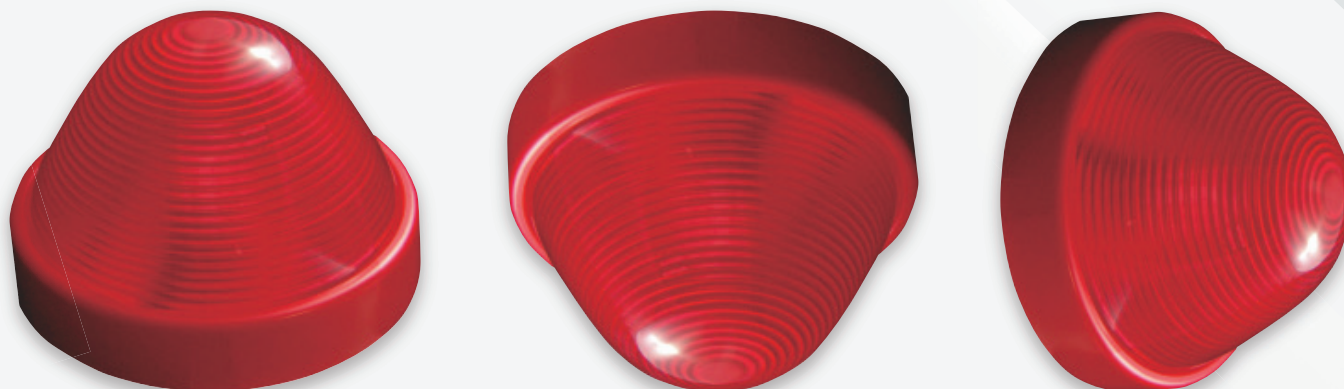
YFB-6 Fire Bell

- ♦ The way of motor-driven is taken at the low consumption of current, to reduce the load for power output from receiver terminal.
- ♦ The fire alarm bell is an equipment controlled by the fire receiver terminal or the repeater and sounds a warning as a fire accident occurred.

Operating Voltage	24V DC	Power Source	Motor
Alarm Current	30mA	Weight	515g
Sound Output	90 dB/M and above	Dimensions	102(Dia.) × 150(H) mm
Color	Red	Material	3.0mm Alloy Alu

INDICATING LAMP

YL SERIES



YL-01 Indicating Lamp

- ♦ Plug-in type of Termination for ease of installation.
- ♦ Highly visible.
- ♦ SMD LED gives high brightness while it has lower power consumption.

Operating Voltage	24V DC	Weight	58g
Alarm Current	11mA	Dimensions	Base of indicating lamp 92(Dia.) × 58(H) mm

REMOTE INDICATION LAMP

YDL-S SERIES



YDL-S01 Remote Indicating Lamp

Model Number	YDL-S01	Ambient Humidity	0~95%
Usage	Detectors	Material	Fire Retardant Plastic
Current Voltage	DC 24V	Dimensions	70(H)×120(W)×15(D) mm
Polarzation	Non-polarized	Weight	40g
Indicator	Red Light	Color	Appearance: White Lamp Cover: White

YDS-H & YDT-H SERIES

Features

- ♦ Audible and easy to understand audio broadcasts for children and seniors.
- ♦ Uses durable lithium battery.
- ♦ Suitable for houses.
- ♦ Equipped with an automatic test function, users would be notified of any faults immediately.
- ♦ Ring-shaped with high brightness alarm indication, without any blind angles.
- ♦ Easy to install without any wires. (wall-mounted type available)

Item	Specification		
Model	YDS-H02	YDT-H02	YDS-H03
Operation Principle	Smoke Detection	Heat Detection	Smoke Detection
Operating Concentration / Temperature	Smoke concentration 15%	Operating temperature 65°C	Smoke concentration 15%
Operating State	Ring type with LED flashes and broadcasts fire alarm warnings in English		LED flashes and broadcasts alarm at the same time
Low Voltage	If the voltage is under 2.69 V, it will chirp sounds every 88 seconds as a reminder		
Fault Status	If any fault is detected, it will keep playing the "fault" sound		
Power Supply	DC3V / Designated lithium battery ※Battery life might depend on the conditions of use.		
Sound Output	Over 80dB for 1m		
Ambient Temperature	0°C~50°C		
Dimensions	102 mm (diameter) × 43 mm (high)		
Weight	Approx. 135 grams	Approx. 113 grams	Approx. 135 grams



YDS-H02



YDT-H02



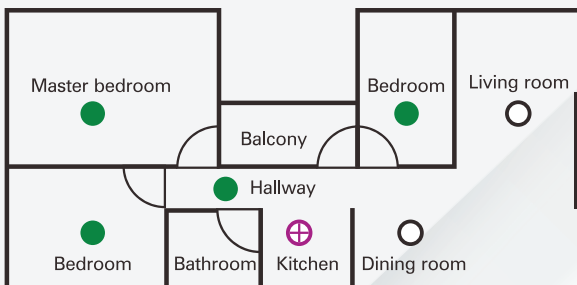
YDS-H03

Installation Location

In order to achieve optimum protection effectiveness, the detector can be installed in every individual room, such as the bedroom, kitchen, stairway, hallway, attic, living room, storage room and basement.
(If the length of the hallway or each individual room is more than 10 meters, it is recommended to install more than one voice alarm detector).

Single floor residence: Install at least one detector inside and outside per room.

Multi-story residence: Install at least one inside and outside per room and in the stairway.



- Locations in the house where it is necessary to install **smoke detectors**.
- Locations where it is recommended to install smoke detectors to achieve optimum protection.
- ⊕ Locations where smoke is frequently detected, and it is recommended to install **heat detectors**.

